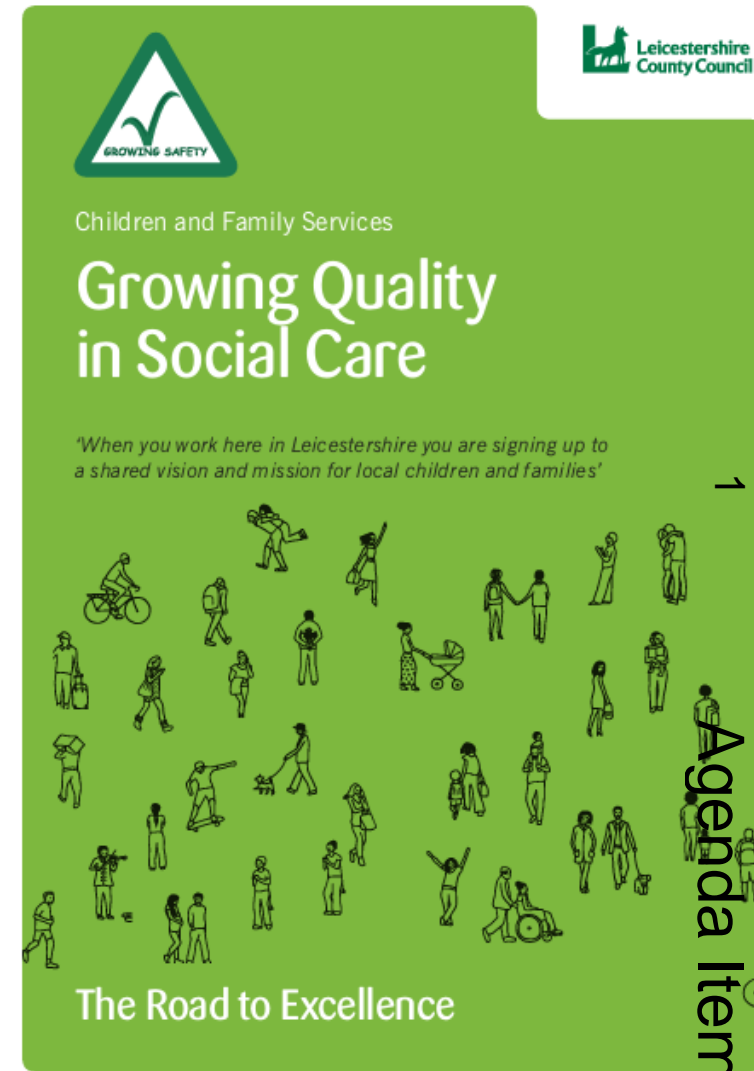


# New Inspection Framework (ILACS) published November 2017



# New System of Inspection

- Regular Contact with Local Authorities and more frequent opportunities to identify any issues of concern
- Focus on practice and timely reflection on experience of children in the area
- ILACS is a system – considered to be proportionate, flexible and bespoke
- Ofsted's grade determines the inspection the next time and what support in between visits

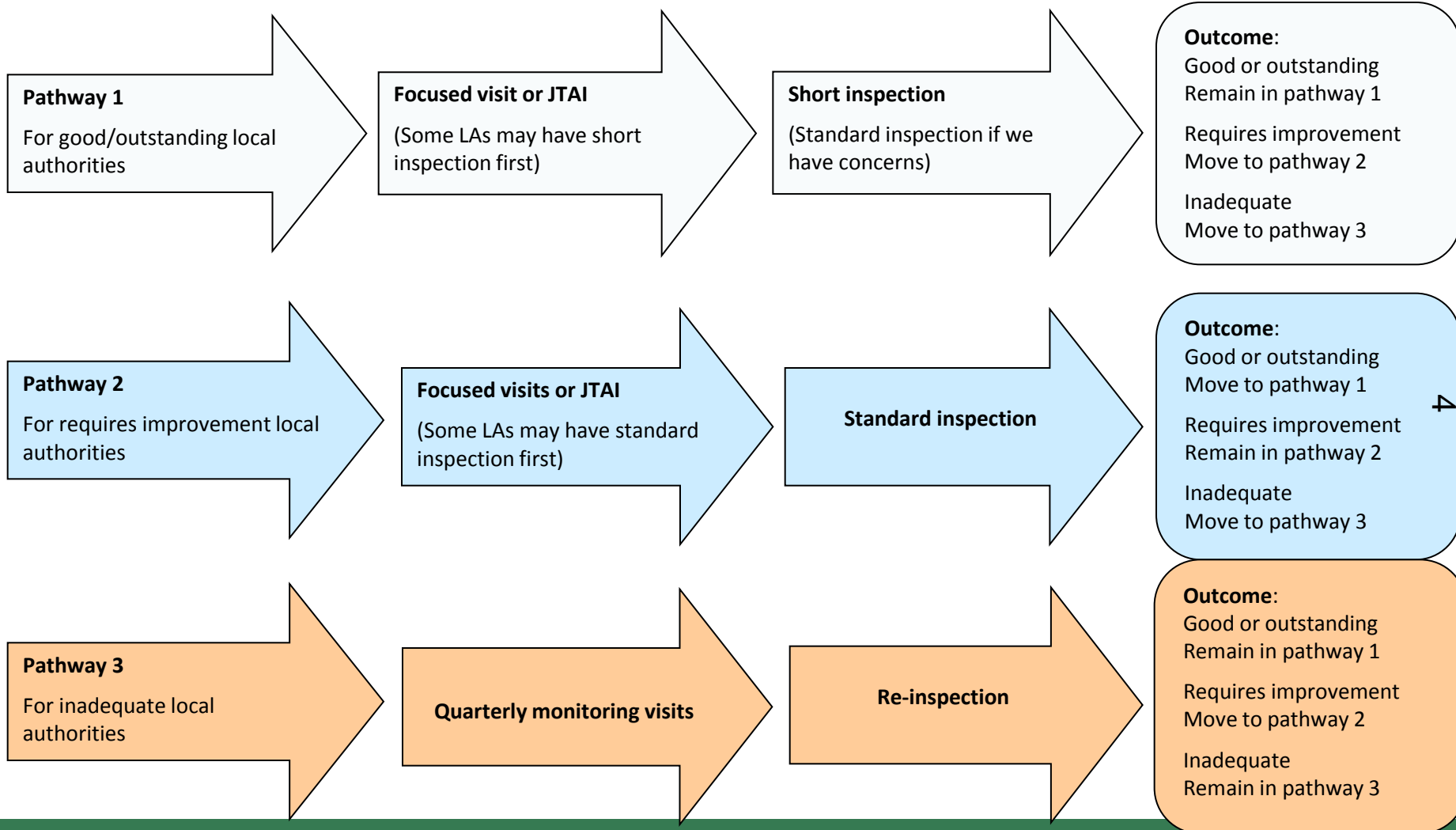
2

# ILACS System

- Local Authorities judged to be 'good' will get a 1 week short inspection once every three years
- Local Authorities judged to be 'requires improvement' to be good 2 week standard every three years
- Inadequate Local Authorities – quarterly monitoring and inspection under SIF
- Focussed visits will identify good practice or 'catch Local Authorities before they fall'
- Annual Conversation between Ofsted and Local Authorities and Annual Self-Evaluation of social work practice

ω

# Inspection pathways



# What does this mean for LCC

- Local Authorities judged to require improvement to be good will receive a standard inspection. Usually 3 years after previous inspection.
- If judged to be good at that inspection will follow process in pathway one
- In between the Local Authority will receive up to two focussed visits.
- One focussed visit may be replaced by a JTAI
- Annual engagement meeting and self-evaluation

51

# Self-Evaluation

- Should answer three questions:-
- What do you know about the quality and impact of social work practice in your local authority?
- How do you know it?
- What are the plans for the next 12 months to maintain or improve practice?

9

# Annual Engagement Meeting

- Can be broader than children's social care e.g. education and early years
- Not used to evaluate direct social work practice
- Will cover the content and impact of the self-evaluation
- Actions and response from previous inspections
- Current financial, political and practice context
- Possible scope of a focussed visit
- Approximate timing of next self-evaluation and meeting
- DCS attends and determines who else e.g. AD

# Leicestershire – Standard Inspection

- Will focus on children and young people's experiences at different points in the system including early help
- The impact of leaders and managers on social work practice with children and families ∞
- Whether the Local Authority's own evaluation of the quality and impact of its performance and practice is accurate
- Graded Judgements



# Judgements

- Overall effectiveness
- The experiences and progress of children in need of help and protection
- The experiences and progress of children in care and care leavers
- The impact of leaders on social work practice with children and families
- 4 point scale - Outstanding, good, requires improvement and inadequate

6

# Focussed Visits

- Will be two unless one replaced by JTAI
- 5 days notice and will contain some or all of the same activity as in the standard inspection
- Will look at one or more aspect of service, themes or cohorts as in the standard inspection and scope. Show case good practice
- Leadership will remain a feature as will performance management, oversight and supervision and quality assurance and CPD

# Findings

- There will be no graded judgement from a focussed visit. Narrative letter to be published – strengths and areas for improvement
- Where there are serious weaknesses – areas for priority action identified – risk or delay
- Systemic failures or deficits – unallocated cases, shortfall in capacity, or deficient management oversight impacting upon service delivery
- Will be used for subsequent inspections

This page is intentionally left blank